



# DTU Donau-Transport- und Umschlagsgesellschaft mbH





KUEHNE+NAGEL 

## Contact:

DTU Donau- Transport und  
Umschlagsgesellschaft mbH  
Linzer Straße 13  
D-93055 Regensburg

Tel. +49 (0)941 60805-0  
Fax. +49 (0)941 60805-66  
[info@dtu-regensburg.com](mailto:info@dtu-regensburg.com)

# DTU Donau-Transport- und Umschlagsges. mbH

## History and Objectives



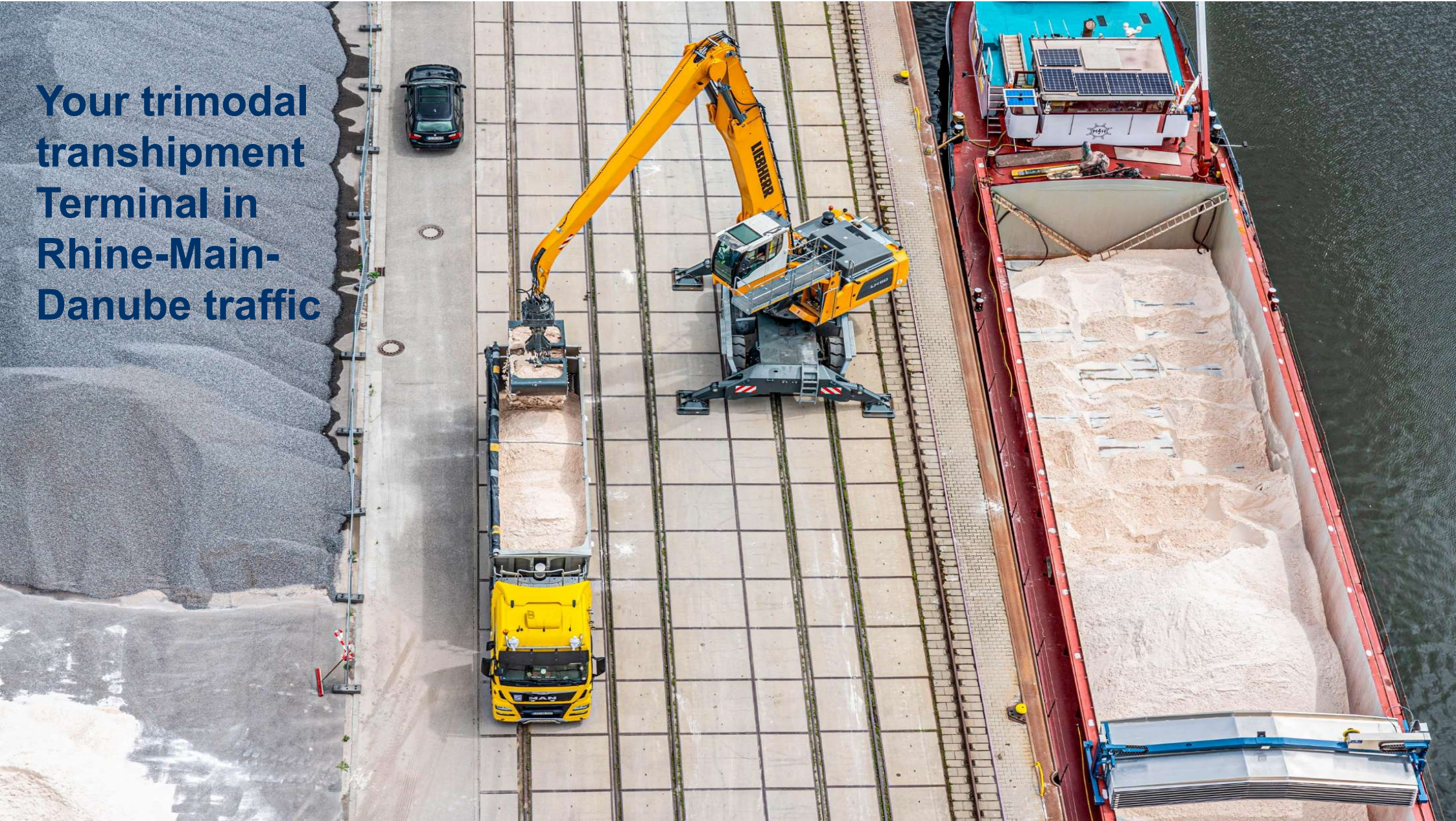
Founded in 1998 as a trimodal, neutral transshipment terminal in Rhine-Main-Danube traffic and situated at the important interface Regensburg, DTU today is a renowned partner for European river shipping companies, operators and shipping agents.

For today's shareholders, namely  
**KUEHNE+NAGEL (AG & Co.) KG**, Germany (50%)



and **MSG eG** at Würzburg (50%), DTU forms an integral part of their fleet management in Rhine-Main-Danube traffic.

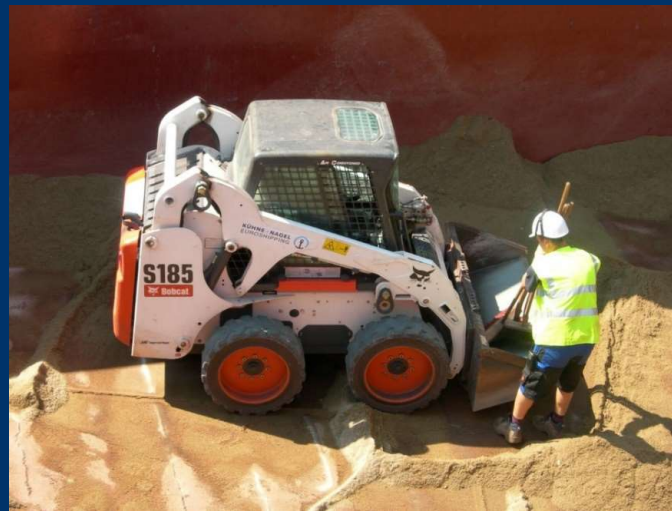
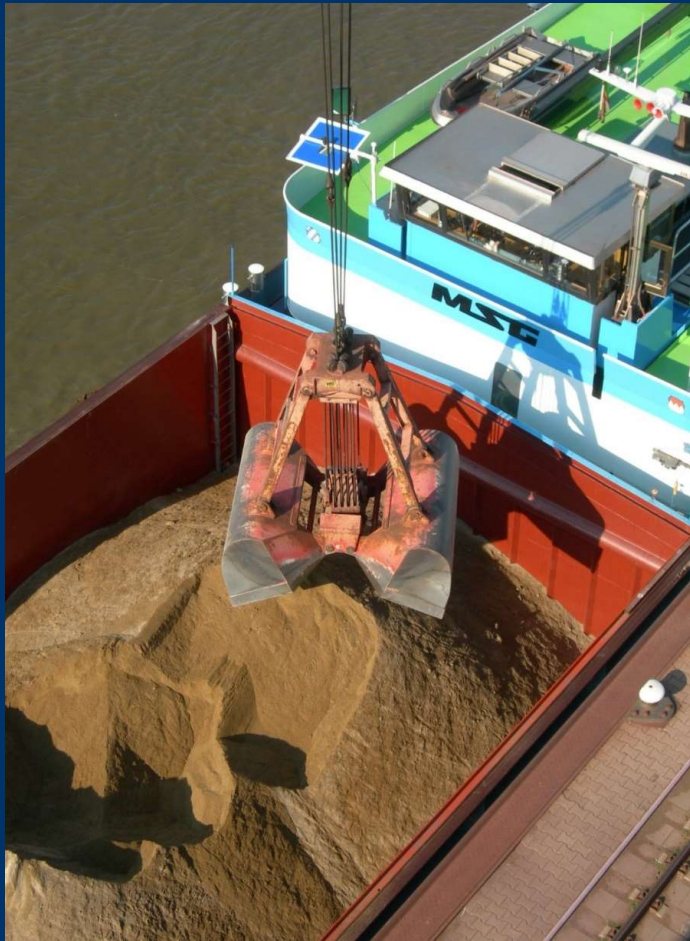
Your trimodal  
transshipment  
Terminal in  
Rhine-Main-  
Danube traffic



# Our services - Transshipment

## Waterside Transshipment

- ship to ship
- direct transshipment from/to truck and rail
- indirect transshipment with interim storage



# Our Services - Transshipment

with two stationary cranes and a mobile excavator (of Bayernhafen GmbH & Co. KG) over a distance of up to three ship's widths

Lifting capacity of the cranes:  
45 tons up to 17, respectively  
31 m outreach ,  
80 tons in twin operation for heavy lift

as well as our own equipment, such as wheel loader with high dump bucket, forklift truck, Bobcats and various grippers and slings



# Our Services - Transshipment

Transshipment of Heavy Load up to 80 tons with cranes in twin operation, with possible interim storage in the port



# Our Services - Multifunctional Storage Areas

about 26,000 sqm storage area in the Western port of Regensburg  
with direct access to ship, truck and railway,  
for storage of various bulk goods, heavy load, also in accordance with the  
Federal Immission Control Act

Storage Area East View



Storage Area West View





## Our Services - Multifunctional Storage Areas

**10.967 sqm** of fortified area, with **7.850 sqm** in accordance with the Federal Emission Control Act, with coalescence separator, for the storage of various goods (iron ore, furnace slag, parcel scrap, finished slag, etc.)

**7.000 sqm** unpaved storage area, also suitable for interim storage of heavy lift

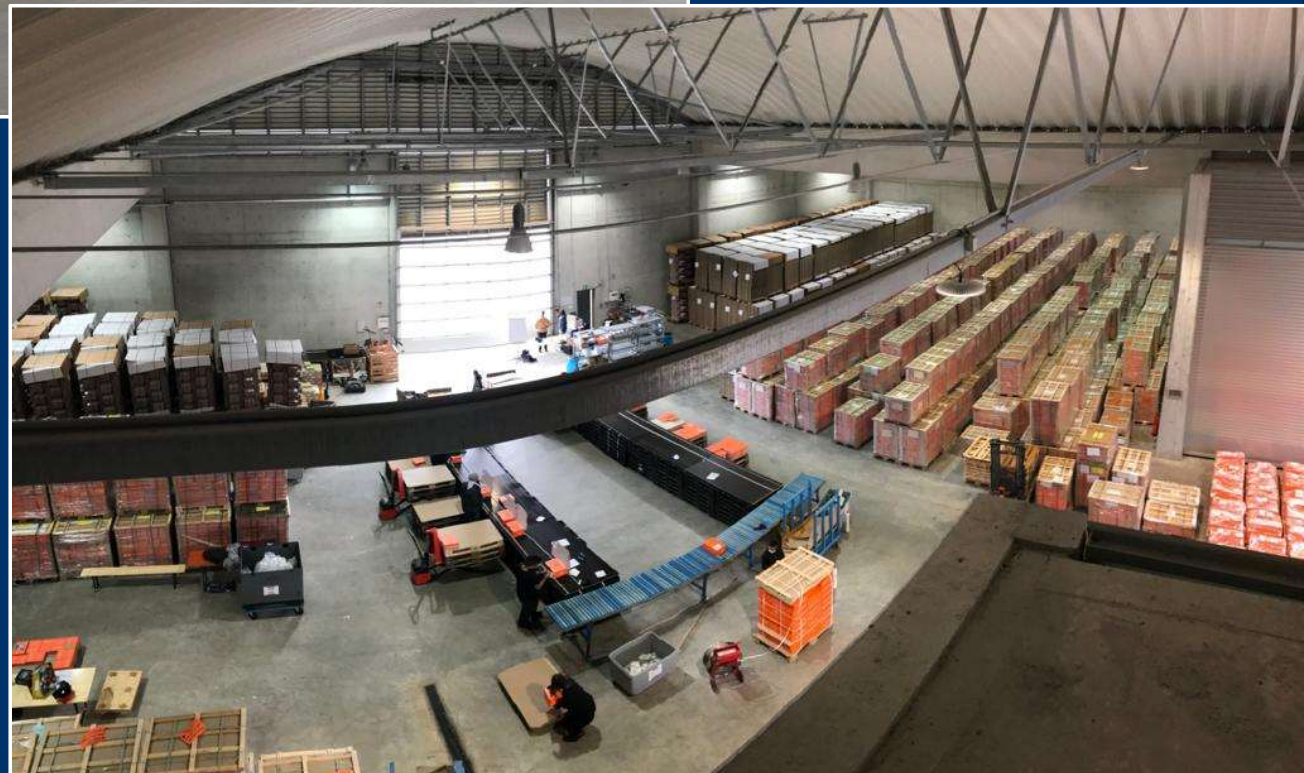
**10.067 sqm** of fortified storage area for bulk goods and heavy lift, including a storage hall with 2,100 sqm surface, built according to the Federal Immission Control Act for storage of bulk goods, waste and palletised goods





## Our Services- Multifunctional Storage Hall

With an overall surface of 2,100 sqm for storage of bulk goods and waste in accordance with the Federal Immission Control Act, and all goods needing safe and dry storage



the storage hall offers two lockable boxes (253 and 161 sqm) and two open boxes (each 552 sqm), vast traffic areas, truck loading ramp ....



KUEHNE+NAGEL 



... fast access to the motorway (2 km), direct access to rail and river vessel



# Certified Quality at DTU



Completely integrated into the Kuehne+Nagel Quality Management, we meet the high requirements of our customers with regard to quality, safety, health and environmental management (QSHE)



**Quality (ISO 9001):** Quality management today requires tracking and monitoring of processes – possible sources of errors are identified, eliminated and documented in advance. Our top priority is to satisfy our customers. Outstanding quality ratings and feedback from our customers show, that we are on the right track.

**Environment (ISO 14001):** For DTU, quality also means conserving resources, being environmentally conscious and communicating these ideals. Every ton that goes on a journey with our inland barges instead of being delivered by truck, contributes to CO<sup>2</sup> reduction. Goods that require monitoring are being stored on our special area, approved in accordance with the Federal Immission Control Act.

**Occupational Safety (ISO 45001):** Occupational safety and health management are of increasing importance. Monitoring and certification by Kuehne+Nagel guarantees that requirements are met at the highest level also in this field.

**GMP-Certification:** Our company meets the strict guidelines of GMP standards for the handling and storage of feed. We can thus guarantee our customers, that their products are in the best hands with us, when it comes to product purity and food safety.



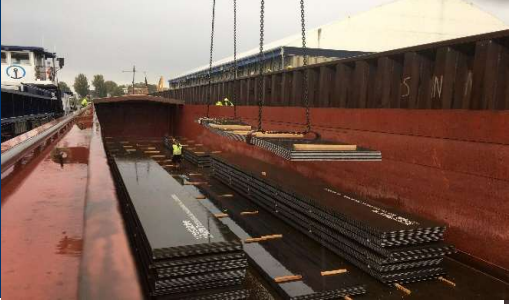
# Variety is a DTU Trademark



Raw Materials



Steel Products



Feeds and Fertilizers



Heavy Load



Recycling/Waste



Finished Slag



Furnace Slag



Wood



# Your Contacts at DTU Donau- Transport- und Umschlagsgesellschaft mbH

## Management



Friedrich Weigert  
Managing Director

Tel: +49 941 60805-10  
Mobile +49 172 44 06 833  
friedrich.weigert@kuehne-nagel.com



Michael Sahrman  
Authorized signatory

Tel: +49 941 60805-85  
Mobil +49 172 44 04 253  
michael.sahrman@dtu-regensburg.com



Martin Staats  
Managing Director  
MSG eG, Würzburg  
Tel: +49 931 9081-100  
m.staats@msggeg.de



Carolin Weichmann  
Dispatcher

Tel: +49 941 60805-25  
Mobil +49 175 88 54 553  
carolin.weichmann@kuehne-nagel.com

## Dispatching/Sales

Inspire. Empower. Deliver.

